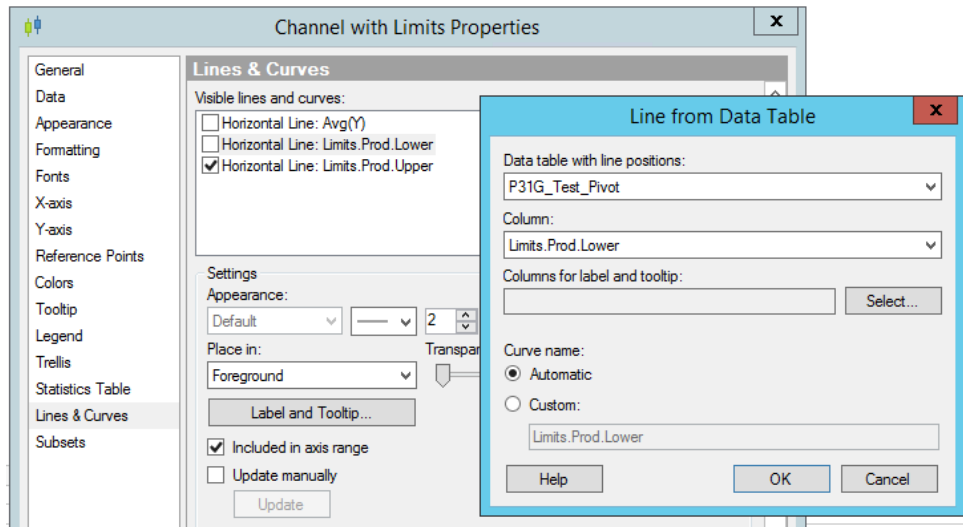


Basic Set up:

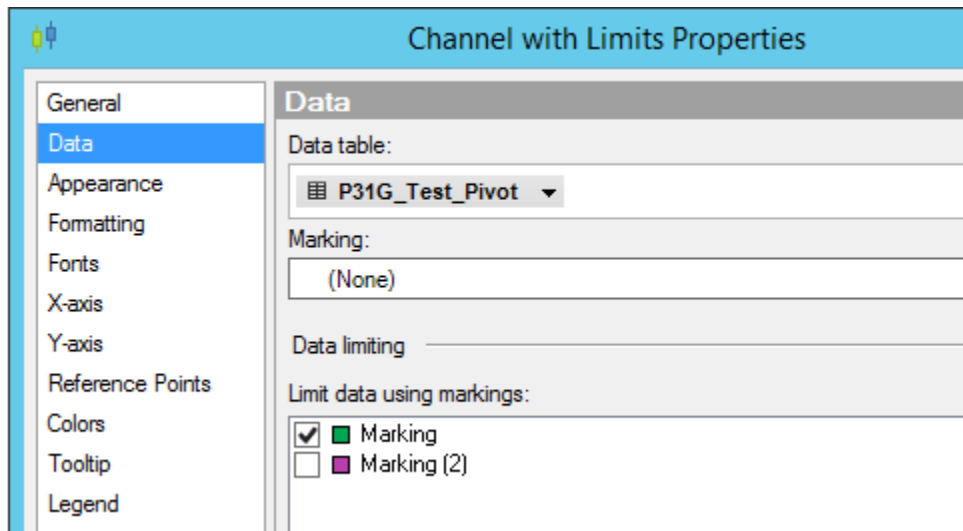
Adding Lines from Table



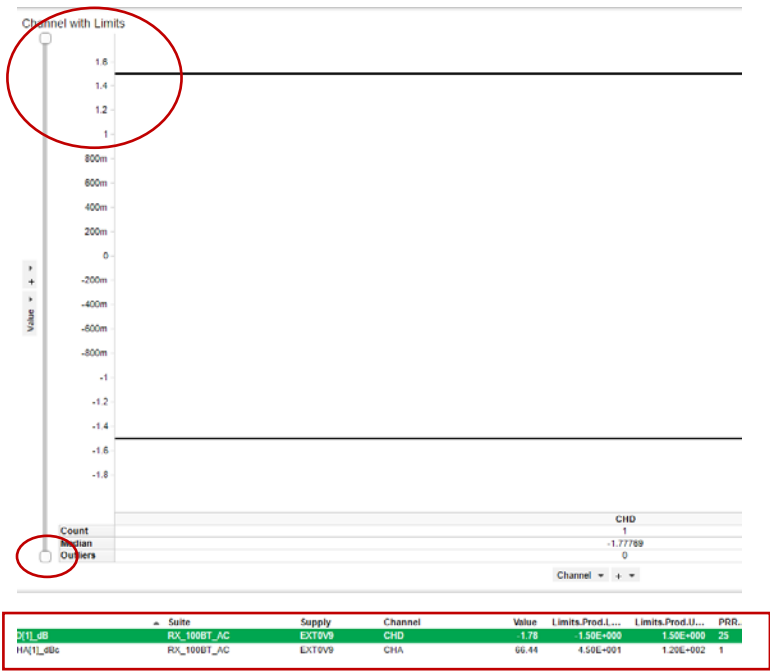
Using 2 different Values with different limit ranges

Value	Limits.Prod.L...	Limits.Prod.U...	PRR.part_id
-1.78	-1.50E+000	1.50E+000	25
66.44	4.50E+001	1.20E+002	1

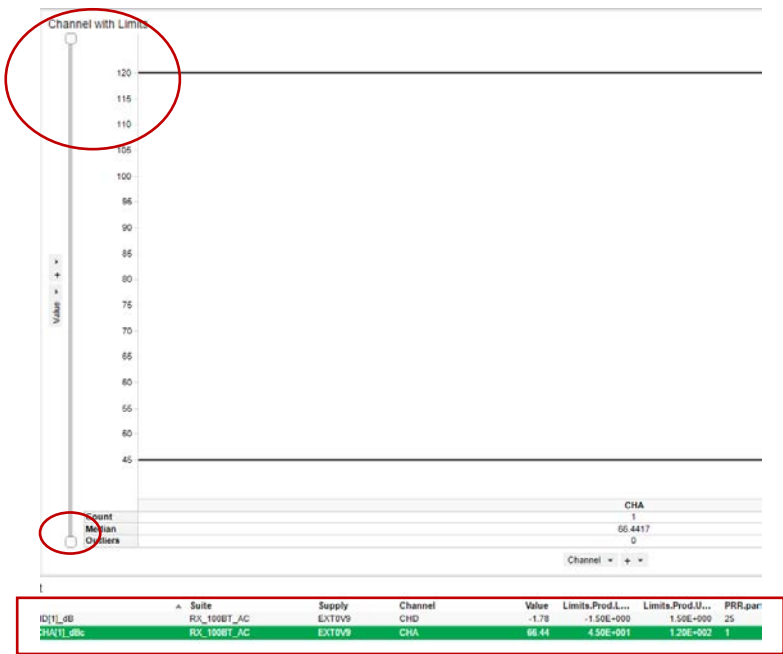
Limit Data using Marking



OK when Zoom Slider is in “reset/initial” position

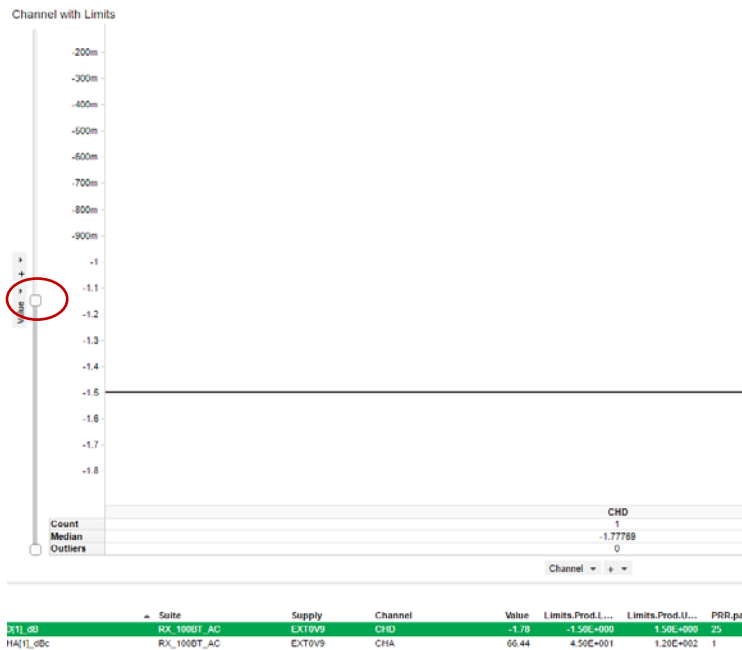


OK - Scaling changes when selecting y axis with different value



NOT OK when using Zoom Slider

- 1) Adjusting ZoomSlider -> scaling on y-axis is OK and changing according to slider position



- 2) Now changing to a different value on Y-Axis:
-> **SCALING on Y-AXIS is NOT changing**
-> **all Values of selected/marked item are out of scale!**

